

The "Invisible Crew"

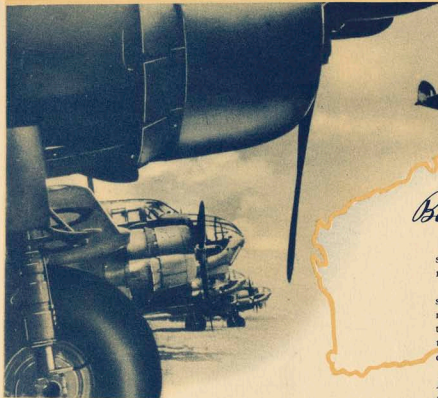


1943

A MESSAGE TO THE WOMEN
OF THE BEAUFORT DIVISION

BEAUFORT DIVISION — DEPARTMENT OF AIRCRAFT PRODUCTION





Beaufort . . . Australia's Industrial Infant Prodigy

Typical of the transformation which has come over Australian industry since the outbreak of war, the production of Beaufort Torpedo Bombers has reached a remarkable stage of development in a little over three years.

Commencing with an empty office in September, 1939, the Beaufort Division of the Department of Aircraft Production is now one of the largest, if not the largest, of single industries in Australia. Although aircraft construction in Australia was only in its embryonic stages before the war, manufacturing capacity has been developed locally for practically all the 39,000 different types of parts required for each Beaufort.

New additions to Australia's manufactures include complex Twin Row Aero Engines, constant speed propellers, intricate hydraulic landing gear, gun turrets, self-sealing fuel tanks, flying instruments, and thousands of other parts which, three short years ago, no one believed the Commonwealth could produce.

All this has been done in the face of tremendous supply difficulties and labor shortages, and it is a source of great pride to those associated with Beaufort production—indeed to all Australians—that these all-Australian-made aircraft are coming from the assembly lines in a steady stream. It is further ground for pride and gratification that Australian Beauforts are playing a notable part in the defence of Australia, and have already accounted for a number of enemy vessels, besides carrying out valuable and widespread reconnaissance activities.

Of the total of 10,000 employees of the Beaufort Division, apart from those employed by some 500 sub-contractors, approximately 80 per cent had no previous factory experience, let alone experience in aircraft production.

It is also notable that 34 per cent of Beaufort employees comprise women who have shown great adaptability in industry and have contributed in a remarkable degree to the defence of Australia.

FROM THE ASSEMBLY LINES, BEAUFORT TORPEDO BOMBERS FLY TO CHALLENGE TOJO



TELEGRAMS
BEAUFORT, MELBOURNE
Address all mail to
G.P.O. BOX No 2095, C 1



COMMONWEALTH OF AUSTRALIA
DEPARTMENT OF AIRCRAFT PRODUCTION

BEAUFORT DIVISION

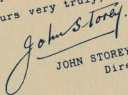
In Reply Quote Our Reference.....

TO ALL BEAUFORT WOMEN

This booklet acknowledges the debt we owe to the women of the Beaufort Division. In helping to build the Beaufort Torpedo Bomber, you have made and are making a notable contribution to the defence of Australia, and your patriotism and self-sacrifice will find a permanent place in the annals of the nation.

In the coming months, even greater dependence will have to be placed on women, in view of Australia's manpower shortage, but I know that we shall not look in vain for your loyal co-operation.

Yours very truly,



JOHN STOREY,
Director.

SEPTEMBER
1943



THE WOMEN OF BEAUFORT

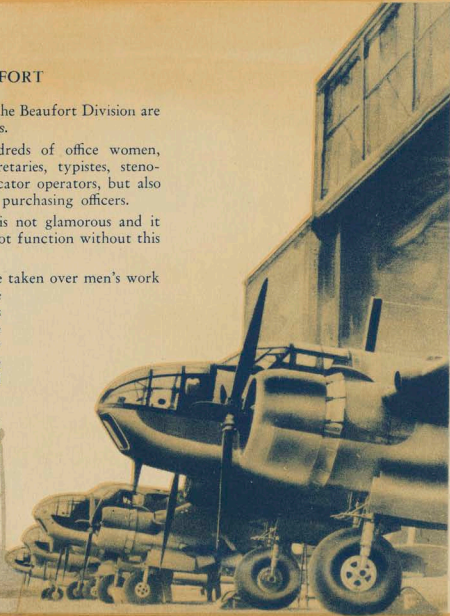
Drawn from all walks of life, the women of the Beaufort Division are performing an extraordinarily wide range of duties.

Behind the production line stand many hundreds of office women, who perform not only the usual functions of secretaries, typistes, stenographers, clerks and accounting machine and duplicator operators, but also serve as tracers, draftswomen, technical artists and purchasing officers.

All have done a splendid job, but their work is not glamorous and it is often forgotten that the production line could not function without this first-line staff of women office workers.

In many production departments, women have taken over men's work and are doing it exceedingly well. Not only have they undertaken such tasks as viewers and examiners of aircraft parts in Beaufort stores, but they have also invaded the workshops and may be seen at any hour of the day or night working as machine operators, assemblers, rivetters, welders, wood and fabric workers, and in scores of other capacities.

Beaufort has found its women keen, alert, versatile and loyal, prepared to work the clock round should the need arise, and cheerfully facing and overcoming difficulties and disabilities in the knowledge that they are backing up their menfolk in the front line.



TYPICAL BEAUFORT OFFICE WORKERS

Top left—Clerks who maintain the Drawing Register in the Planning Department.

Top right—A section of the Typing Pool.



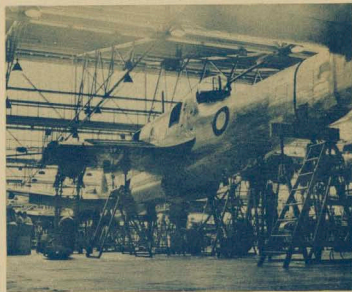
Left—Typing Production Schedules, and a busy scene in the Planning Register Section.

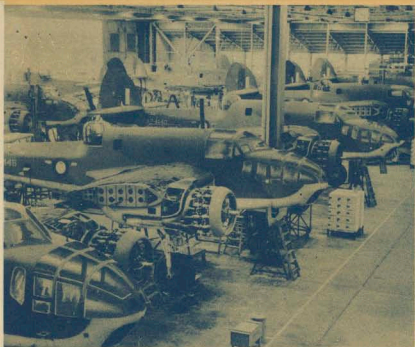
GLIMPSES OF THE MAIN ASSEMBLY
PLANT IN VICTORIA . . .

*Where major components are assembled into completed
Aircraft.*

Top—A partly-completed Plane moves forward in the
Assembly Line.

Below left—At work on a wing. *Right*—The Assembly
Line, showing Beaufort Torpedo Bombers nearing com-
pletion.





PART OF THE MAIN ASSEMBLY PLANT
IN NEW SOUTH WALES . . .

A Duplicate of the Victorian Plant.

Beauforts in various stages of assembly.

Right—Women on Electrical Wiring at the Assembly
Plant.

